

KENTUCKY SOCIAL WORK  
**LOBBY DAY**  
MARCH 5, 2024

---



## **2024 KY LEGISLATIVE WEBSITE LINKS & KENTUCKY SOCIAL WORK ASSOCIATIONS!**

*Kentucky Proud.* Social workers and students collaborating, networking, and empowering our profession across Kentucky. Our voices. Our vision. Be the change? We are the change!

We hope you enjoy this additional mini-Tool-Kit that will be updated each year in time to celebrate KY Social Work Lobby Day. As social workers and social work students, it is critical to become familiar with our legislative process in the classroom and in our communities and how it impacts Kentucky citizens.

Please take some time to review [each link](#) so you can become informed and active in Kentucky policy and advocacy. We have made it easy to access the many different sections of the website simply by clicking 'open hyperlink' to explore everything you need to know about the legislative process.

We have also included links and information about social work associations in Kentucky, as well as links to BSW, ASWB. and CSWE. Please check out the KSWAN YouTube channel: <https://www.youtube.com/@kentuckysocialworkadvocacy3808> This is where you can find all of our taped virtual lobby day programs.

Please register for 3/5/24 Social Work Lobby Day/Rally in the Rotunda at 1pm:

QR Code HERE

## My Legislative Worksheet

### SOCIAL WORK IS POLITICAL!

#### My Legislators

Let's begin by [finding your KY legislators](#):

My Representative (House) is: \_\_\_\_\_

My Senator is: \_\_\_\_\_

#### Review of Bills

What Bill do I Support? What Bills do I Oppose?

Bill Number	Support – Yes!	Oppose – No!	Notes

**Call 1-800-372-7181 to Support or Oppose bills**

**MONDAY THROUGH FRIDAY 8:00AM-4:30PM/EST**

**\*\*EXCEPT DURING THE LEGISLATIVE SESSION the hours are  
7:00AM-11:00PM Monday-Thursday and 7:00AM-6:00PM Friday\*\***

## Tips for Effective Citizen Lobbying

### What is this toolkit?

The purpose of this advocacy packet is to provide social workers with tools they can use to engage in the legislative process. *Why does that matter?* Two reasons: (1) our legislators work for us, and it's important that they know what issues are important to us personally and professionally (2) our code of ethics calls social workers to engage in advocacy in section 6:

#### **6.01 Social Welfare**

*Social workers should promote the general welfare of society, from local to global levels, and the development of people, their communities, and their environments. Social workers should advocate for living conditions conducive to the fulfillment of basic human needs and should promote social, economic, political, and cultural values and institutions that are compatible with the realization of social justice.*

#### **6.04 Social and Political Action**

*(a) Social workers should engage in social and political action that seeks to ensure that all people have equal access to the resources, employment, services, and opportunities they require to meet their basic human needs and to develop fully. Social workers should be aware of the impact of the political arena on practice and should advocate for changes in policy and legislation to improve social conditions in order to meet basic human needs and promote social justice.*

*(b) Social workers should act to expand choice and opportunity for all people, with special regard for vulnerable, disadvantaged, oppressed, and exploited people and groups.*

*(c) Social workers should promote conditions that encourage respect for cultural and social diversity within the United States and globally. Social workers should promote policies and practices that demonstrate respect for difference, support the expansion of cultural knowledge and resources, advocate for programs and institutions that demonstrate cultural competence, and promote policies that safeguard the rights of and confirm equity and social justice for all people.*

*(d) Social workers should act to prevent and eliminate domination of, exploitation of, and discrimination against any person, group, or class on the basis of race, ethnicity, national origin, color, sex, sexual orientation, gender identity or expression, age, marital status, political belief, religion, immigration status, or mental or physical ability.*

## Tips for Effective Citizen Lobbying

### Lobbying Tip Sheet

- ➡ Take the long-term view of your relationship with each legislator.
- ➡ Tell personal stories. Why is the issue important to you?
- ➡ Do your homework. You should know the basic facts of the bill, the bill number, who the sponsors are, and where it is in the legislative process.
- ➡ Always be more reasonable than our opponents. Stay calm, cool, respectful and firm.
- ➡ Understand that your job is to educate lawmakers about issues and bills they may not be familiar with.
- ➡ Ask directly for their support. "Will you vote for this bill?"
- ➡ Say thank you, no matter his/her response, and send a note.
- ✗ Don't make stuff up. If you don't know the answer to a question, say that you will find out. Be sure to follow up!
- ✗ Don't threaten lawmakers. Don't make disrespectful statements. (Be hard on the issues, not the people.)
- ✗ Don't assume that lawmakers know every bill or issue.
- ✗ *Don't get discouraged. You have every right to be heard. Your voice and your perspective matter.*



## Tips for Effective Citizen Lobbying

### Calling Your Legislator

If you cannot reach the legislator directly, leave a phone number where calls can be returned to and ask to speak to available staff. They will notify the legislator of contact of calls received and are often very helpful.

Before you call, jot down the main points that you want to include in your conversation. Practice what you are going to say.

- Ask to speak directly to the legislator.
- Identify yourself and where you are from (city, county).
- Be brief and concise. State the purpose for your call.
- Express your appreciation if the legislator is supportive of your issue. If the legislator is undecided, offer to provide more information.
- If you know the bill number and title, be sure to refer to it in your conversation.
- Be prepared to spend more time if the legislator wants more information.
- Remember to be courteous and to thank the legislator or staff person for their time.
- Send a follow - up letter restating the substance of the call and the legislator's position on the issue as it was understood (whether there was direct contact with the legislator or with their staff). Again, thank the legislator for their time.

The content of a phone call to a legislator is very similar to that of a letter. Be prepared to answer questions and provide additional information. Following is a sample phone call script that you can use as a guide for calling legislators.

## Tips for Effective Citizen Lobbying



### Sample Letter/Email to a Legislator

Dear Senator or Representative,

As a Social Worker and voter in your district, I welcome you to the [Insert Year] session for the Kentucky General Assembly. I'd also like to take this opportunity to introduce myself.

**(Take 1 PARAGRAPH to describe your social work practice or if you're a student, the type of social work practice you're planning to go into).** I am a Licensed Social Worker and member of the Kentucky Chapter of the National Association of Social Workers. I provide clinical social work services including therapy with individuals, groups, and families at the XYZ mental health center in Your Town. I have been practicing here since 1990.

**(Take 1 PARAGRAPH to describe the most pressing things you see or experience in your practice)** While I love the practice of social work, the many hurdles my clients must face in using my services do frustrate me. Sometimes treatment is denied or they cannot utilize their health insurance and must pay out of pocket. It is my hope that we can discuss these issues further.

Please don't hesitate to contact me if I can ever serve as a resource, and I look forward to further contacts with you.

Sincerely,

Jane Addams, MSW, LCSW

## Tips for Effective Citizen Lobbying

### Sample Letter/Email to a Legislator

Your Address

City, state, zip code

Phone number

Date

The Honorable (full name)

Address

Dear Representative OR Senator (last name):

I am a registered voter in (City, County, District) and I work in the field of (mental health, school social work, public welfare, etc.). It has come to my attention that the KY General Assembly is considering (describe action and give a bill number). I am concerned about the negative impact this action will have on (client/group).... OR, I support this bill (give reasons for support. Also, give cost implications and anecdotal information about client impact.).

These services are critical to my clients and to many others in Kentucky with similar issues.

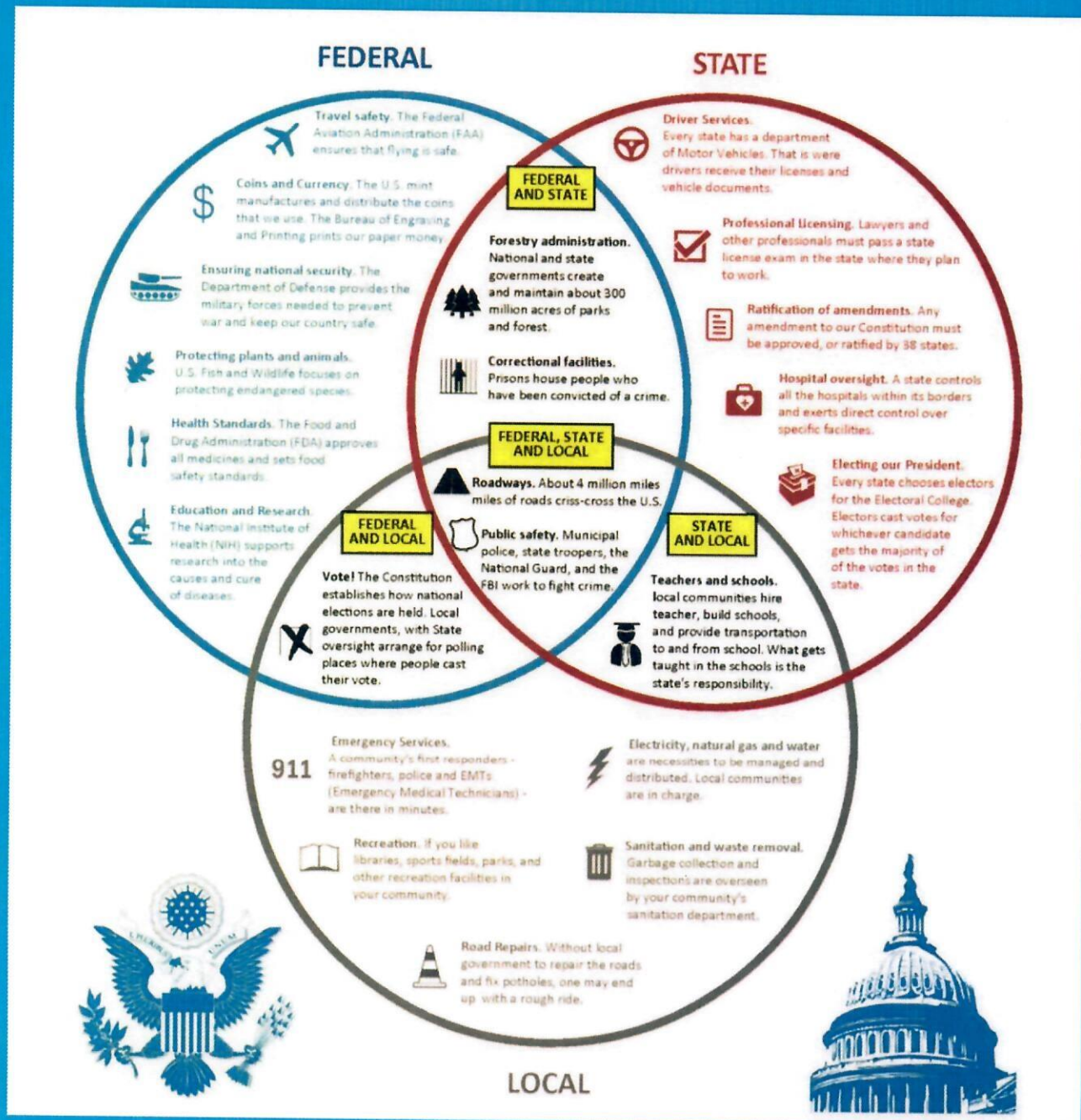
I realize that you are faced with many tough decisions but providing services to people who desperately need them should be a priority. Have the courage to do the right thing and invest in all our people. Please let me know your position on (your issue).

Sincerely,

Your name, Title, Credentials



# FEDERAL, STATE, & LOCAL



<https://www.mckinneytexas.org/1086/Legislative-Priorities>



# How bills become law in Kentucky

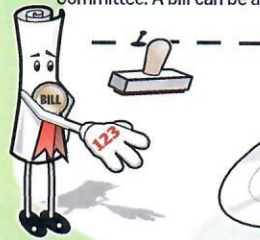
## 1 A bill is introduced

Bills are filed in the House or Senate.



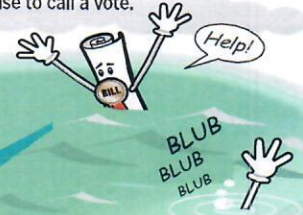
## 2 To committee

Once filed, a bill gets a number and is referred to a committee that handles similar topics. An anti-pollution bill, for example, would go to the House Natural Resources and Environment Committee. A bill can be amended in committee.



## Troubled waters

A bill can be assigned to a committee whose chairman opposes it. The chairman can refuse to schedule the bill for a hearing — known as “stalling” it — or allow a hearing but refuse to call a vote.



## Rescuing a bill

If a majority opposes holding a bill in committee, they can vote to “discharge” it from the committee and send it to the floor. But this rarely happens.

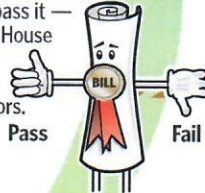
## 8 A bill becomes law if the governor ...

- Signs it.
- Allows it to become law without signing it.
- Vetoes the bill but the veto is overridden by a vote by a constitutional majority in each chamber — 51 in the House, 20 in the Senate.



## 3 Floor vote

When a committee passes a bill, it goes back to the House or Senate for a floor debate and vote, where a majority of voting members, in most cases, is enough to pass it — 51 if all 100 House members vote, or 20 of 38 senators.



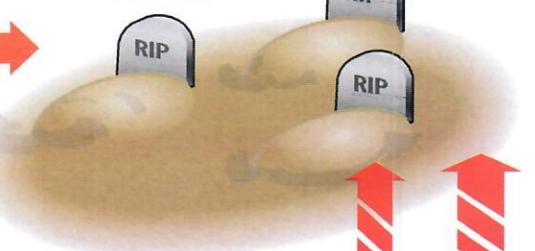
## Adding baggage or gutting a bill

Opponents can try to avoid a floor vote by getting a bill referred to another committee. Once on the floor, a bill can also be amended during floor debates, and legislators who oppose it can try to minimize its impact — known as “gutting” it — through an amendment. Other amendments can improve a bill.



## Bill graveyard

Bills on rare occasions can be resurrected.



## 5 Compromise

If the House and Senate pass different versions of a bill, each chamber appoints members to a conference committee to work out a compromise. The agreed-upon version then goes back to each chamber for a final vote.

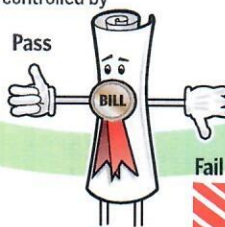
If the conference committee fails to reach a compromise, the bill dies.



Two versions of the same bill

## 4 On to the other chamber

When the Senate passes a bill that was introduced there, it then goes to the House and is referred to a House committee, and vice versa. The bill goes through the same committee and floor vote procedures. In addition to the usual committee and floor debate risks, bills that pass one chamber can run into greater opposition once they go to the other side, especially when the House and Senate are controlled by different political parties.



Bills can be held “hostage” — set aside until the Senate or House acts on bills considered a priority by the other chamber.



## 6 Final vote

If the House and Senate accept the compromise, the bill passes and goes to the governor. If either chamber doesn't like the compromise, lawmakers can reject it.



## 7 Governor

The governor has 10 days to act on a bill after receiving it.



## A bill will not become law if ...

- The governor vetoes the bill and the House or Senate fails to override the veto.

Source: Courier-Journal research

By Steve Reed, The Courier-Journal

## Visit the 2024 Kentucky Legislative Website:

<https://legislature.ky.gov/>

We have made it easy to access the many different sections of the website simply by clicking ‘open hyperlink.’ As social workers, social work students, and voters, it is critical we become familiar with our legislative process. Please take some time to review each link so you can become informed and active in Kentucky policy and advocacy!

***SOCIAL WORK IS POLITICAL!***

**CALL 1-800-372-7181**

MONDAY THROUGH FRIDAY 8:00AM-4:30PM/EST

**\*\*EXCEPT DURING THE LEGISLATIVE SESSION the hours are\*\***

- 7:00AM-11:00PM Monday-Thursday
- 7:00AM-6:00PM Friday

You can leave a message of **support** OR **opposition** for bills and can call every day. You can have your message shared with:

- your Representative
- your Senator
- the Committee sponsoring the bill
- AND/OR the entire General Assembly

**\*\*Please keep your message SHORT as EVERY WORD IS recorded as spoken.\*\***  
**NO FOUL LANGUAGE PLEASE.**

*LRC provides several toll-free Numbers\*.*

<b>Legislative Message Line</b>	1-800-372-7181
<b>Bill Status Line</b>	1-866-840-2835
<b>Kentucky Relay Service</b>	711
<b>Calendar (Meetings) Line</b>	1-800-633-9650
<b>En Español</b> Solamente durante la sesión legislativa	1-866-840-6574

*\*Toll-free numbers are operational only in Kentucky*

## LEGISLATIVE RESEARCH COMMISSION

**Main Phone:** 502-564-8100

**Address:** 700 Capital Ave., Frankfort, KY 40601

Please **CLICK ON EACH SECTION** to be directed to the specific information on the legislative website. If you have trouble accessing these links, please refer to:

<https://legislature.ky.gov>

- [Bills](#)
- [Kentucky Law](#)
- [Kentucky Revised Statutes](#)
- [Kentucky Administrative Regulations](#)
  - [KAR FAQs](#)
  - [Registers](#)
  - [Emergency Regulations by Number](#)
  - [Last Effective Dates, Expirations, and Certifications](#)
- [Legislators](#)
  - [Find your legislator](#)
- [Legislative Calendar](#)
- [Schedules & Calendars](#)
- [Search](#)
- [Committees](#)
  - [House Standing Committees](#)
  - [Senate Standing Committees](#)
  - [Interim Joint Committees](#)
  - [Special Committees](#)
  - [Caucuses](#)
  - [Statutory Committees](#)
- [Public Services](#)

### WATCH LIVE!

- [KET Livestream](#) (there's an app for that!)
- [Watch committee meetings on YouTube](#)
- <https://www.facebook.com/NASWKentucky/>



## KENTUCKY SOCIAL WORK ASSOCIATIONS

Kentucky Social Work Lobby Day is a collaboration between the below social work associations and groups who work together to engage, educate, and empower social workers and students through advocacy, networking, and mentoring. We strive to support each other and our commitment to make a better Kentucky for everyone.



### [Kentucky Society for Clinical Social Work - KSCSW](#)

The Kentucky Society for Clinical Social Work (KSCSW) is committed to promoting a strong professional image for Kentucky clinical social workers, educating its members about legislation that affects their practices, and upholding ethical excellence.

[www.kscsw.org](http://www.kscsw.org)



### [Home | KASSW](#)

About Us. KASSW is committed to improving the quality of life and education for Kentucky's children by enhancing the professional development of school social workers.

[www.kasswky.com](http://www.kasswky.com)



For more information about the Kentucky Chapter, please contact:  
[Brosten.naswky@socialworkers.org](mailto:Brosten.naswky@socialworkers.org)

### [National Association of Social Workers - NASW Home](#)

Founded in 1955, the National Association of Social Workers (NASW) is the largest membership organization of professional social workers in the world, with more than 120,000 members. NASW works to enhance the professional growth and development of its members, to create and maintain professional standards, and to advance sound social policies.

[www.socialworkers.org](http://www.socialworkers.org)



South Central Chapter:  
Monica.hines@wku.edu or  
Torchia.rogers@gmail.com  
Phone number 270-745-2523  
UK Chapter: @ABSW\_UK (Twitter  
and Instagram)  
kywildcatsabsw@nabsw.org

## [National Association of Black Social Workers \(NABSW\)](#)

Join the National Association of Black Social Workers . The National Association of Black Social Workers, Inc., comprised of people of African ancestry, is committed to enhancing the quality of life and empowering people of African ancestry through advocacy, human services delivery, and research.

[www.nabsw.org](http://www.nabsw.org)



## [Social Work Anti-racist Coalition of Kentucky](#)

The Social Worker Anti-Racist Coalition of Kentucky believes it is the responsibility of social workers to focus on the elimination of white supremacy in micro, mezzo, and macro levels of practice. Our work is powered by intersectionality, social justice, social action, institutional accountability, practice reform, and policy activism.

<https://www.swarck.com/demands>



## [KASWE \(Kentucky Association of Social Work Educators\)](#)

The members of KASWE strive to:

- Promote a better understanding and communication among social work educators, and between social work educators and social work practitioners, and between social work educators and students.
- Facilitate the coordination and linkages of social work education programs within the state of Kentucky.
- Advocate the professional interests of social work educators and of the social work profession.

KASWE also [supports the demands](#) of the Social Work Anti-Racist Coalition of Kentucky.

[www.kaswe.org](http://www.kaswe.org)



## Kentucky Social Work Advocacy Network (KSWAN)

Kentucky Social Work Advocacy Network (KSWAN) is a collaboration across all Kentucky Social Work associations and universities, comprised of all Kentucky Social Workers, both students and...

<https://www.facebook.com/groups/3949197731781127>

### **Additional Resources for Social Workers**

Kentucky Board of Social Work	<a href="https://bsw.ky.gov/Pages/index.aspx">https://bsw.ky.gov/Pages/index.aspx</a>
Association of Social Work Boards	<a href="https://www.aswb.org/">https://www.aswb.org/</a>
Council on Social Work Education	<a href="https://www.cswe.org/">https://www.cswe.org/</a>

With gratitude and acknowledgement for the Social Work Lobby Day Tool-Kit:

Carrie Cole, MSSW: Kentucky Social Work Lobby Day flyer

Bailey Cooke – KSWAN flyer

Ondine Quinn, MSW, CSW: NASW-KY Tool-kit 2018, pgs. 3-7

NASW-TX - Federal, State, & Local Infographic

Courier-Journal.com 1.6.2008 - How bills become law in Kentucky –

Brenda Rosen, MSW, CSW - Welcome to the 2022 Kentucky Legislative Website

And to Josh Patrick.....the IT genius who put this tool-kit together!